

***7.1.3 Describe the facilities in the Institution for the management of the following types of degradable and non-degradable waste***

- Solid waste management
- Liquid waste management
- Biomedical waste management
- E-waste management
- Waste recycling system
- Hazardous chemicals and radioactive waste management

**Documents of different waste management Projects/activities**

<b>Documents Uploaded</b>			
<b>Sl. No.</b>	<b>Particulars</b>		<b>Page No.</b>
1	Solid Waste Management	Geotagged Photos of Colour Coded dust bins located in the Campus	2-3
		Geotagged Photos of Composting system	4-5
2	Liquid Waste Management	Geotagged Photos of Liquid waste management system in the campus	6-7
3	E-Waste Management	Geotagged Photos of collection of E-Waste from Campus	8
4	Waste recycling system	Geotagged Photos of usage of recycled water in the Campus	9

## **1. Solid Waste Management**

Colour coded separate dustbins are kept at different locations in the campus to collect the waste.

<b>Sl. No</b>	<b>Description</b>	<b>Details</b>
1	Type	Dust bin
2	Color	Blue, Green & Yellow
3	Capacity	110L, 50L
4	Material	HDPE
5	Eco Friendly	Yes
6	Movable	Yes



**Colour coded dustbins near MBA Block**

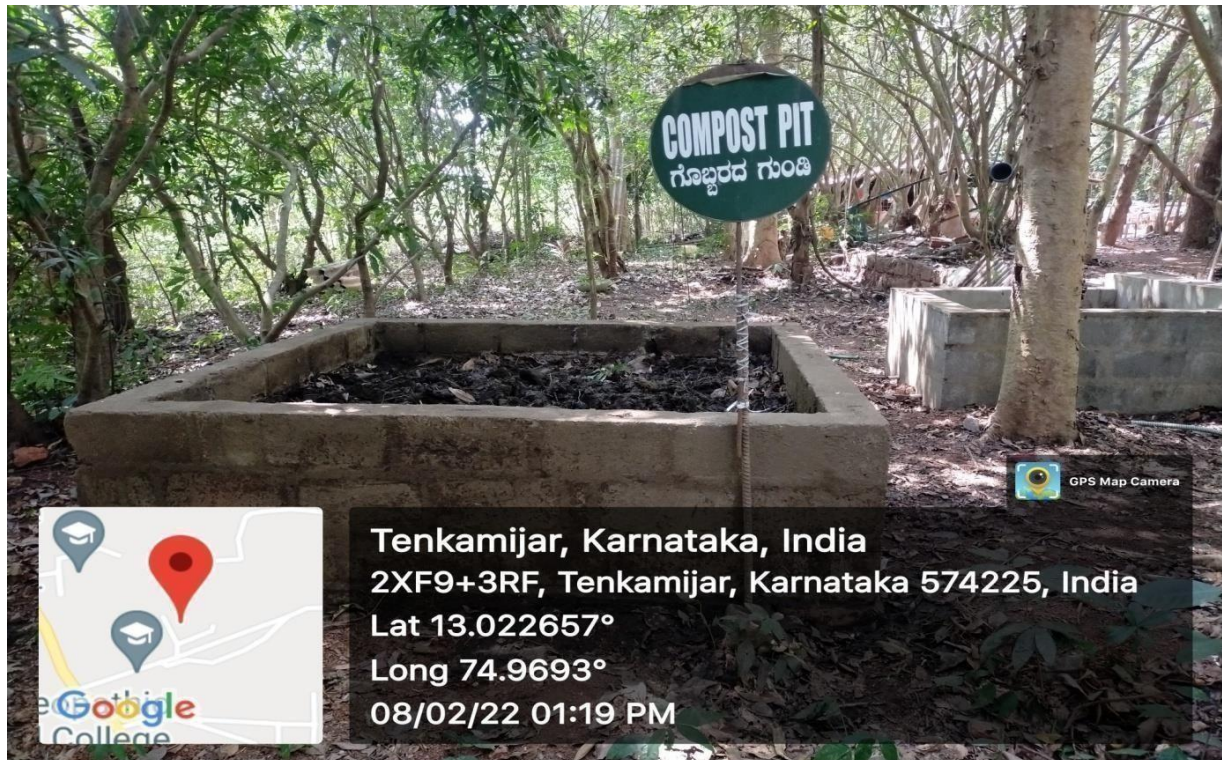


**Colour coded dustbins in front of AIET Main block**



### Compost Pit

The leaves of plants are converted into manure by the way of composting. Compost pit are located in Shobhavana Herbal Garden of AIET.



**Compost pit at Shobhavana Herbal Garden**





**Shobhavana Herbal Garden uses Manure from compost Pit**



## **2. Liquid Waste Management**

The liquid wastes from individual blocks are collected in storage pit having capacity of 5 lakh liters. After treatment, the recycled water is using for cultivation area and garden.



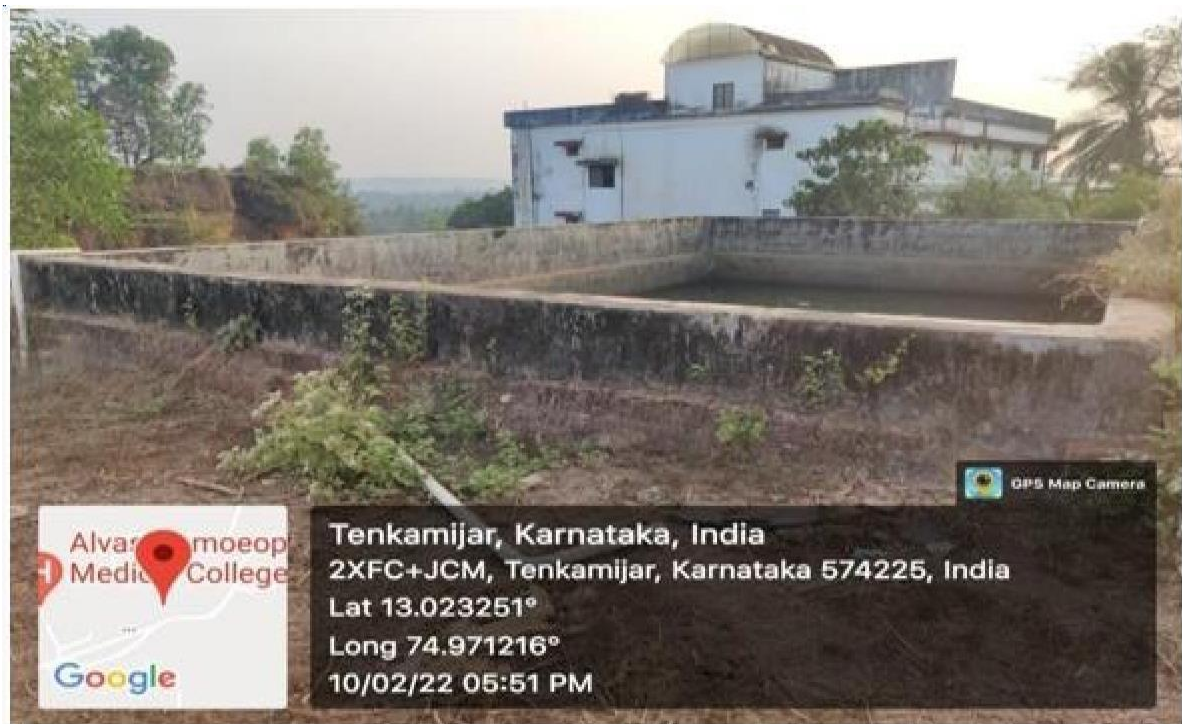
**Sewage Collecting Tank of 5 lakh liter**



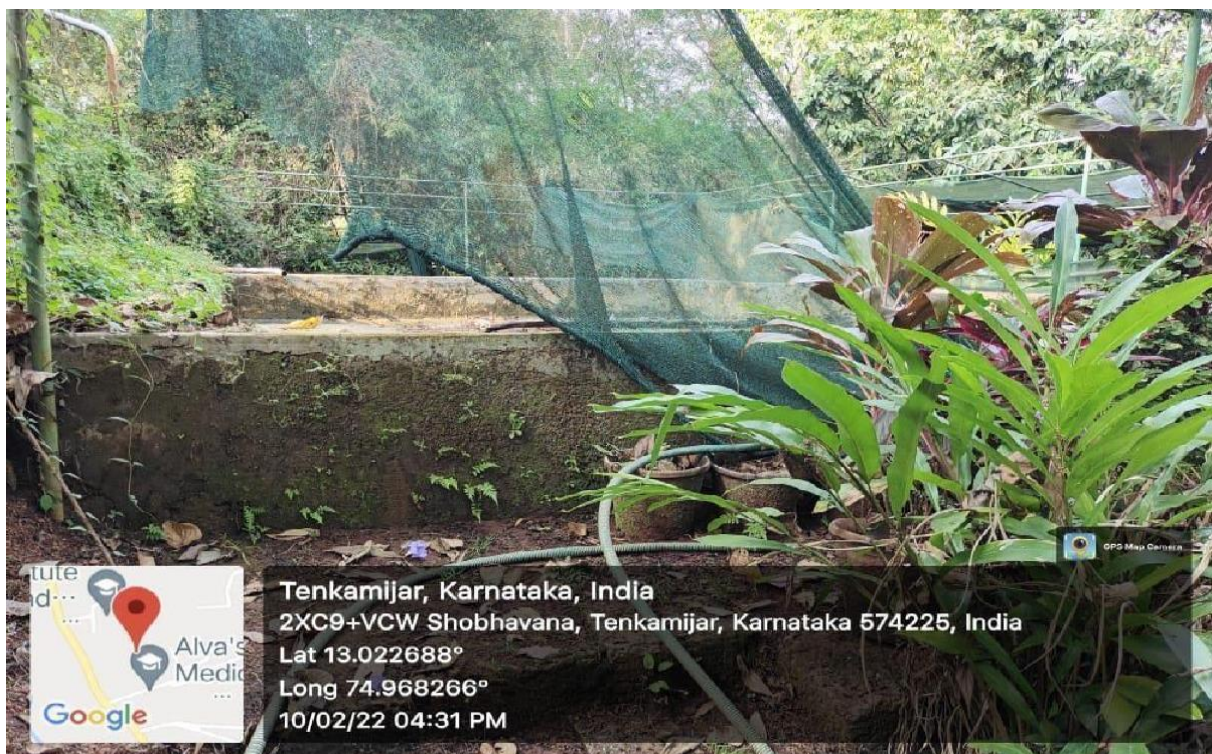
**Treatment Chamber of Size 3m x 2m x 1m**

**Pump room of Size: 3.35m x 2.10m**





**Recycle water tank at East end of Girls Hostel of 350000 liter capacity**

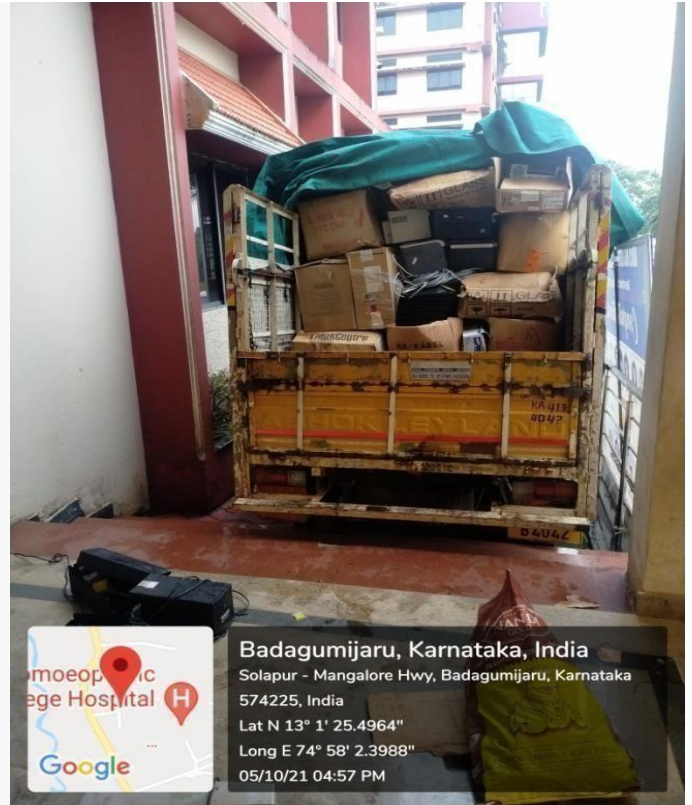


**Recycle water tank of 300000 liters capacity at Shobhavana Garden**



### **3. E- Waste Management**

The E-Waste generated in the campus are collected by *M/s Sogo Synergy Pvt. Ltd, and Bangalore.*



**Collection of E- Waste from AIET**



## **4. Waste Recycling System**



**Recycled water for Coconut farm in the campus**